

**PRODUCT INFORMATION**  
SAMPLER  
PORTABLE  
BÜHLER 2000



## The Accurate: Portable Water Sampler BÜHLER 2000

- **Lightweight, corrosion-free PE housing**
- **Easy to clean sample container, distributor**
- **Cost-effective in purchase and maintenance**
- **Ideally suited for all sorts of surveys, monitoring schemes**

### The Facts

The automatic portable water sampler BÜHLER 2000 is ideal for use in sewage treatment and industrial facilities and for monitoring surface waters or indirect dischargers. The sampler functions according to the pressure-vacuum-principle and operates in time-, volume- (flow-proportional), or event-based mode. The different sample container options make the instrument extremely flexible in standard and individual applications.

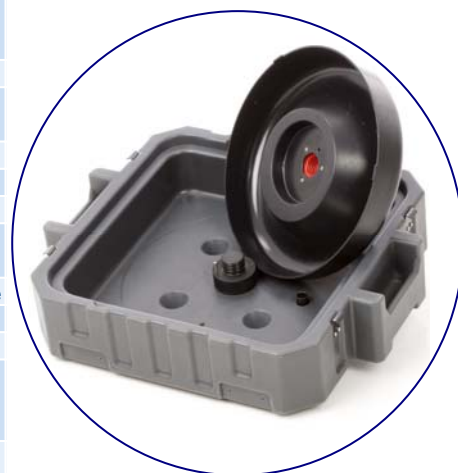
The compact, weatherproof housing is made of PE plastic ensure failure-free operation over many years and often changing installation locations. Because of the new designed sample distributor and the standard round sample bottles time consuming cleaning efforts are reduced to a minimum to avoid crosscontamination. The operation of thousand times proven stationary HACH LANGE samplers is also used by the BÜHLER 2000.



# Technical Data

Sampling principle	Pressure-vacuum principle
Single sample volume	20–350 ml, freely adjustable
Sample container	Plastic (PE): 1 x 13 l, 1 x 25 l, 4 x 5 l, 24 x 1 l 16 x 1.0 l in combination with standard ice packs Glass: 24 x 1 l
Sample lift height	Max. 6 m (at 1,013 hPa)
Suction rate	>0.5 m/s for sample lift height of max. 5m (at 1,013 hPa); Pump performance electronically adjustable
Suction tubing	5 m PVC tube (10 mm ID)
Bottle filling time	1 min. to 99 h 59 min.
Dosage pause	1 min. to 99 h 59 min.
Sampling	Time-, volume and event-based sampling Delayed start of program selectable
Manual Sampling	Possible at any time, without interfering with the program sequence
Volume Accuracy	1.5 % (95 % confidence interval)
Sample distributor	Robust round distributor
Dosage system	Standard vacuum system Sample volume selectable: 20–350 ml By cutting dosage tube
Signal inputs	1 x analogue: 4–20 mA, optional 0–20 mA, cut-off voltage 3.3 V 5 x digital: (volume, event, 3 x freely programmable)
Signal outputs	Depending on model, up to 8 x digital (freely programmable)
Programs	6 user-defined sampling programs (freely programmable)
Languages	Choice of several languages
Communication	Serial RS232 Interface
Status messages	All relevant messages and sample history are stored Such like: Sampling, program start, program end, sample missed
Temperature control	Standard: no sample cooling Optional: standard ice packs for sample cooling
Power requirement	Rechargeable battery, 12V, 10 Ah, 230V/115V battery charger
Operating pressure	Pressureless
Housing	Sampler base: double-walled PE plastic Cover: single walled PE plastic Cover can easily be lifted for maintenance or status check, protects all components against dirt and humidity Suction inlet at right-hand side of housing
Ambient temperature	+0.1 to +43 °C
Sample temperature	+0.1 to +40 °C
Dimensions (H x W x D)	
Cover closed	787 x 510 x 468 mm
Cover opened	995 x 510 x 710 mm
Weight	About 22 kg with rechargeable battery and bottle option 24 x 1 l PE
Optional accessories	Charger, folding transport truck, ice packs, intake device and much more

Subject to change.



Distributor system BÜHLER 2000  
Demounted distributor can be cleaned within a few seconds

### Representative samples in conformity with ISO 5667

All BÜHLER pressure-vacuum samplers are ISO 5667 compliant and therefore satisfy the requirements for subsequent reproducible analysis. To avoid crosscontamination, the system is purged before and after each sample is taken.

### HACH LANGE Services



Contact us to place an order, request information or receive technical support.



Service packages and extended warranty up to 5 years.

**HACH LANGE GMBH**  
Willstätterstraße 11  
D-40549 Düsseldorf  
Tel. +49 (0) 211 52 88-0  
Fax +49 (0) 211 52 88-143  
info@hach-lange.de  
www.hach-lange.com